

SAVE OUR SPRINGS ALLIANCE

BILL BUNCH - EXECUTIVE DIRECTOR

A look at the Hays County portion of the CAMPO 2045 draft plan



WHAT WE ARE ASKING OF THE HAYS COUNTY COMMISSIONERS' COURT

1. Resolution asking CAMPO to POST COMPLETE AND ACCURATE DRAFT PLAN FOR FULL 45 DAY COMMENT PERIOD.

- * DRAFT IS AND HAS BEEN INCOMPLETE, WITH MISSING SUPPORTING DOCUMENTS
- * MAP IS WRONG - EXCLUDES NEW ROADS PROPOSED FOR HAYS COUNTY
- * ONLINE COMMENT TOOL SEEKS ANONYMOUS ANSWERS TO SLANTED SURVEY, WHILE DISCOURAGING COMMENTS
- * ABOVE FLAWS - VIOLATION OF REQUIRED "REASONABLE OPPORTUNITY TO COMMENT"

2. Resolution to LAUNCH PUBLIC PROCESS TO REVISE AND UPDATE HAYS COUNTY TRANSPORTATION PLAN

WHAT WE ARE ASKING OF THE HAYS COUNTY COMMISSIONERS' COURT



3. Resolution asking CAMPO to:

(A) Remove Escarpment Extension,

(B) Remove San Marcos Western Loop,

(C) Remove Jacob's Well Road Extension (south of 2325)

(D) Remove Wayside Drive extension (bridge over Blanco at Wimberley)

(E) Scale back proposed divided highway expansions of RR 12, RM 1826, and FM 150 to improvements to the existing roadway, prioritizing safety and not capacity expansion

(F) Scale back other proposed road expansions in western Hays County to prioritize safety, watershed protection, and scenic beauty, not capacity expansion.

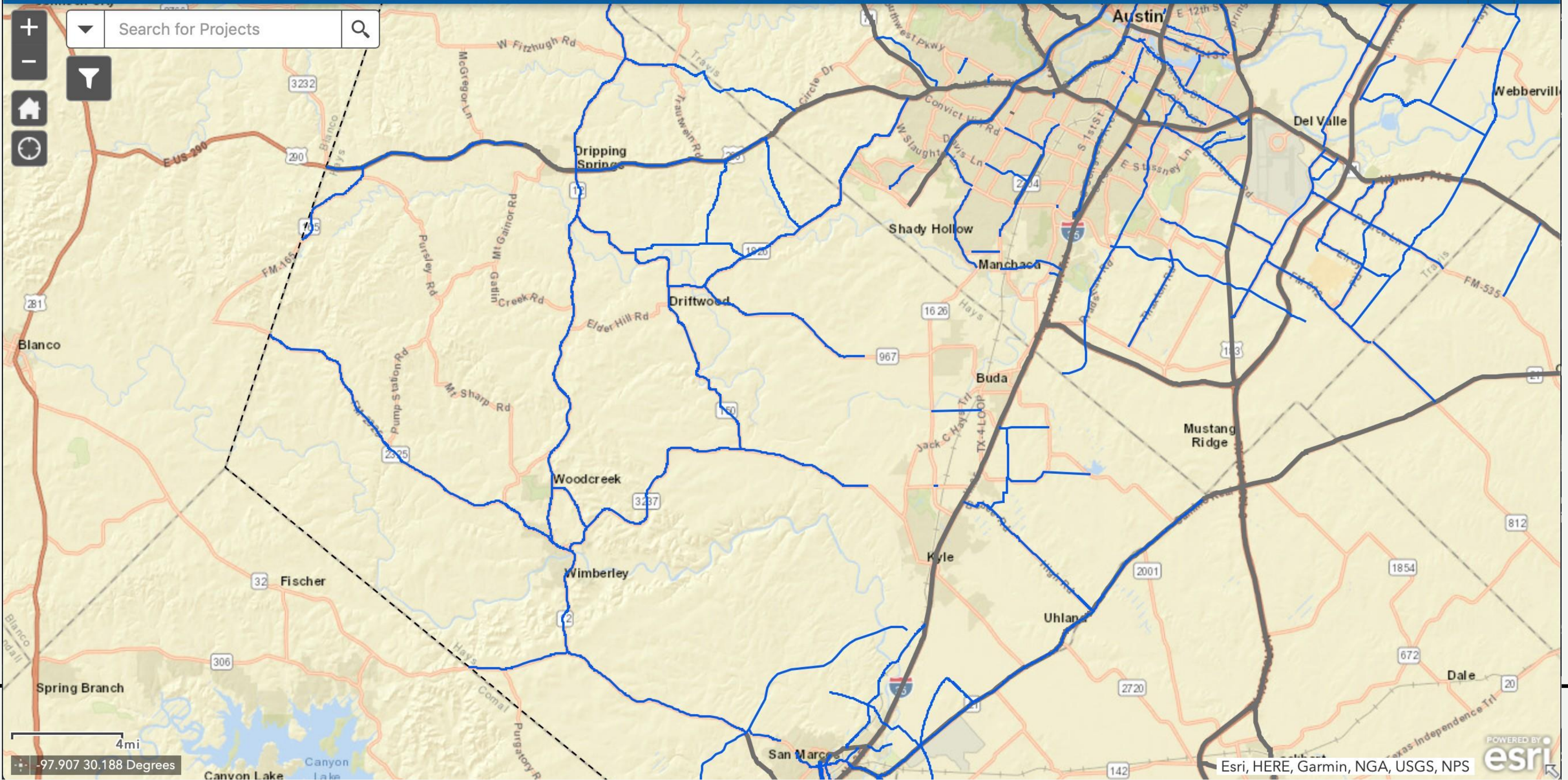
(G) Create a "Hill Country Conservation" road designation for all roads in Hays County over and upstream of the Edwards Aquifer Recharge Zone



CAMPO 2045 Draft Regional Projects

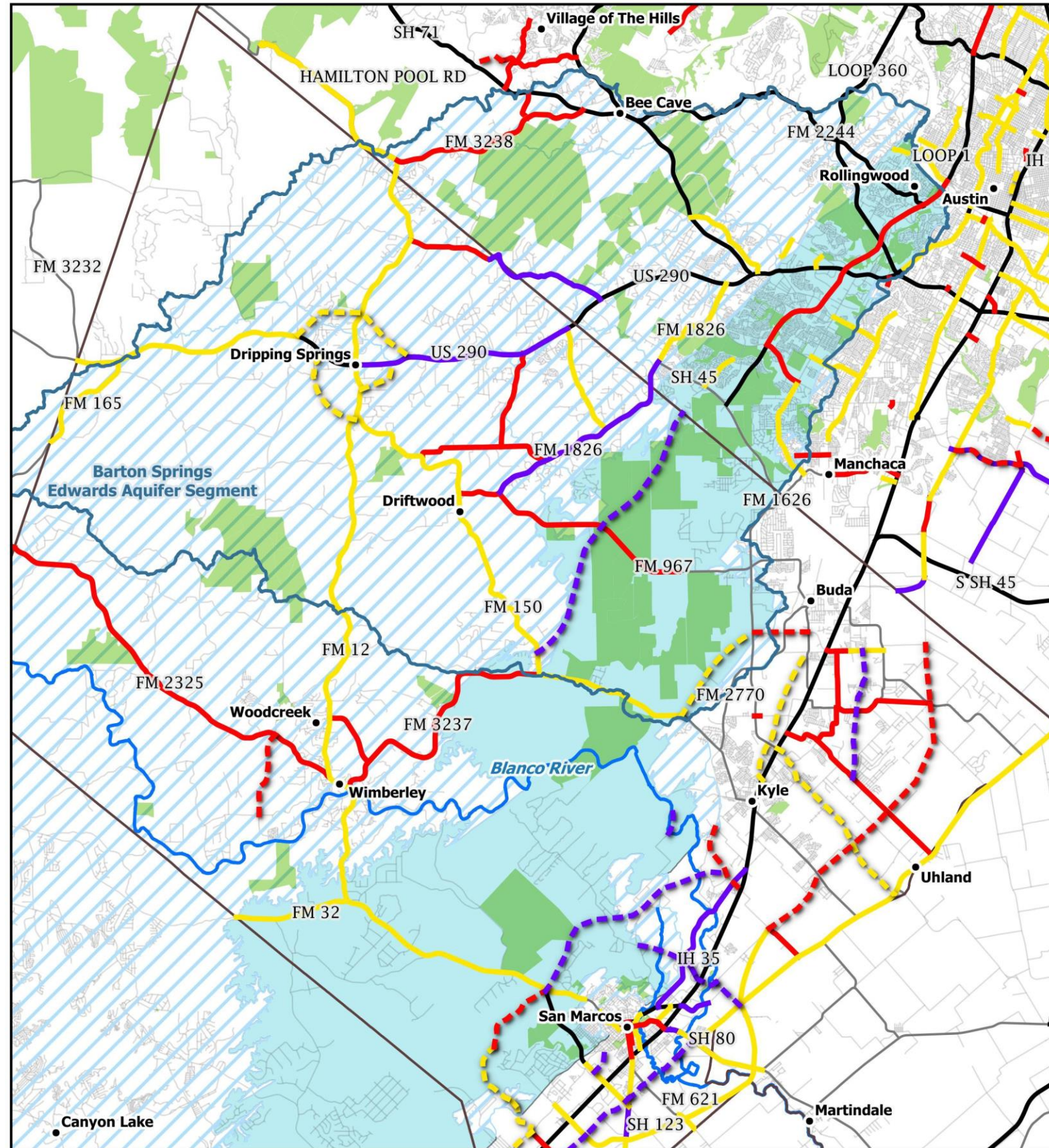


Search for Projects



CAMPO 2045 Projects by Year

- | | | |
|------------------|---------------------------|-------------------------|
| New Roads | Expansion Projects | Highway Projects |
| --- 2020 - 2025 | — 2020 - 2025 | ■ Recharge Zone |
| --- 2026 - 2030 | — 2026 - 2030 | ▨ Contributing Zone |
| --- 2031 - 2045 | — 2031 - 2045 | ■ Conservation Lands |

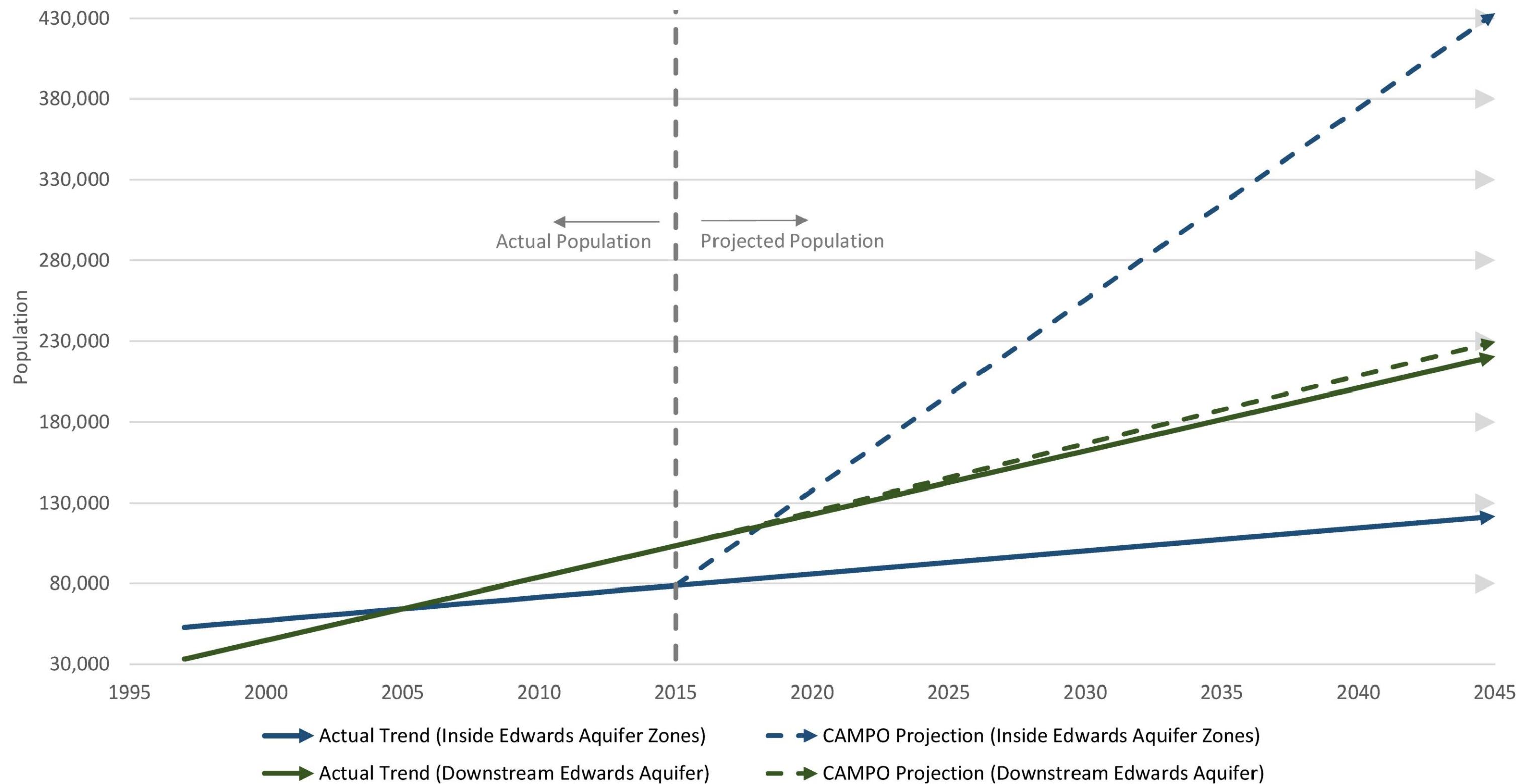


Last Updated on 4/27/2020

Hays County Growth Projections

Within and Downstream of the Edwards Aquifer Watershed

Comparison of Actual Population Trends and CAMPO 2045 Projections



Sources: Aquifer deliniation from Texas Commission of Environmental Quality; 1997 population from 2003 CAMPO model files; 2015 population and 2045 projections from CAMPO 2045 Draft Plan demographics website.

Hays County Growth Projections

Within and Downstream of the Edwards Aquifer Watershed

Comparison of Actual Population Trends and CAMPO 2045 Projections

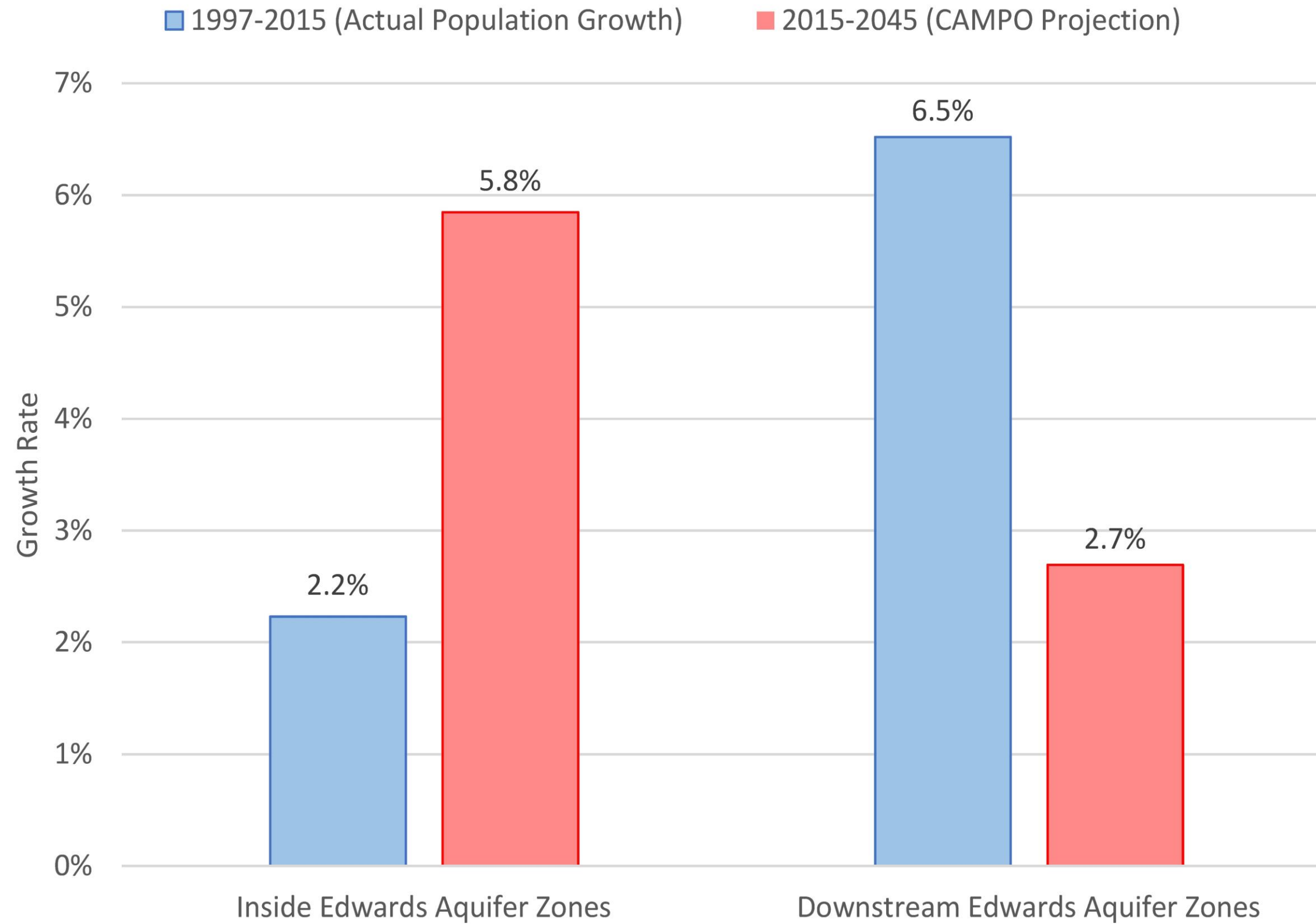


	Actual Population Trend Inside Edwards Aquifer Zones	CAMPO Projection Inside Edwards Aquifer Zones	Actual Population Trend Downstream Edwards Aquifer Zones	CAMPO Projection Downstream Edwards Aquifer Zones
1997	52,949	52,949	33,172	33,172
2015	78,740	78,740	103,455	103,455
2045 Projections	121,725	433,162	220,593	229,635
Population Change (2015-2045)	42,985	354,422	117,138	126,180

Discrepancy Between CAMPO Projection and Actual Population Trend (Inside Aquifer)	311,437
Discrepancy Between CAMPO Projection and Actual Population Trend (Downstream Aquifer)	9,042

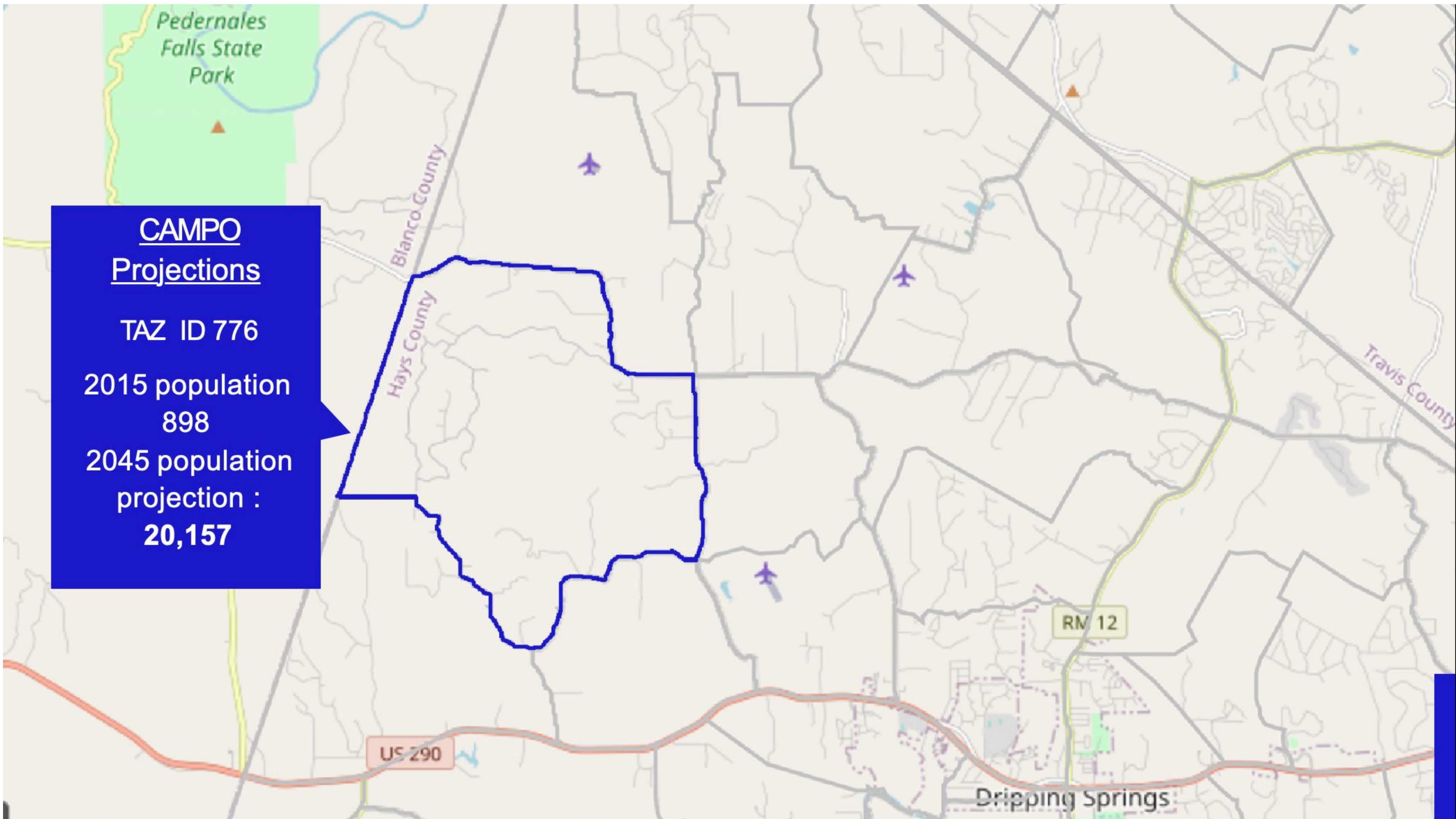
Sources: Aquifer deliniation from Texas Commission of Environmental Quality; 1997 population from 2003 CAMPO model files; 2015 population and 2045 projections from CAMPO 2045 Draft Plan demographics website.

Hays County Growth Projections Within and Downstream of the Edwards Aquifer Watershed

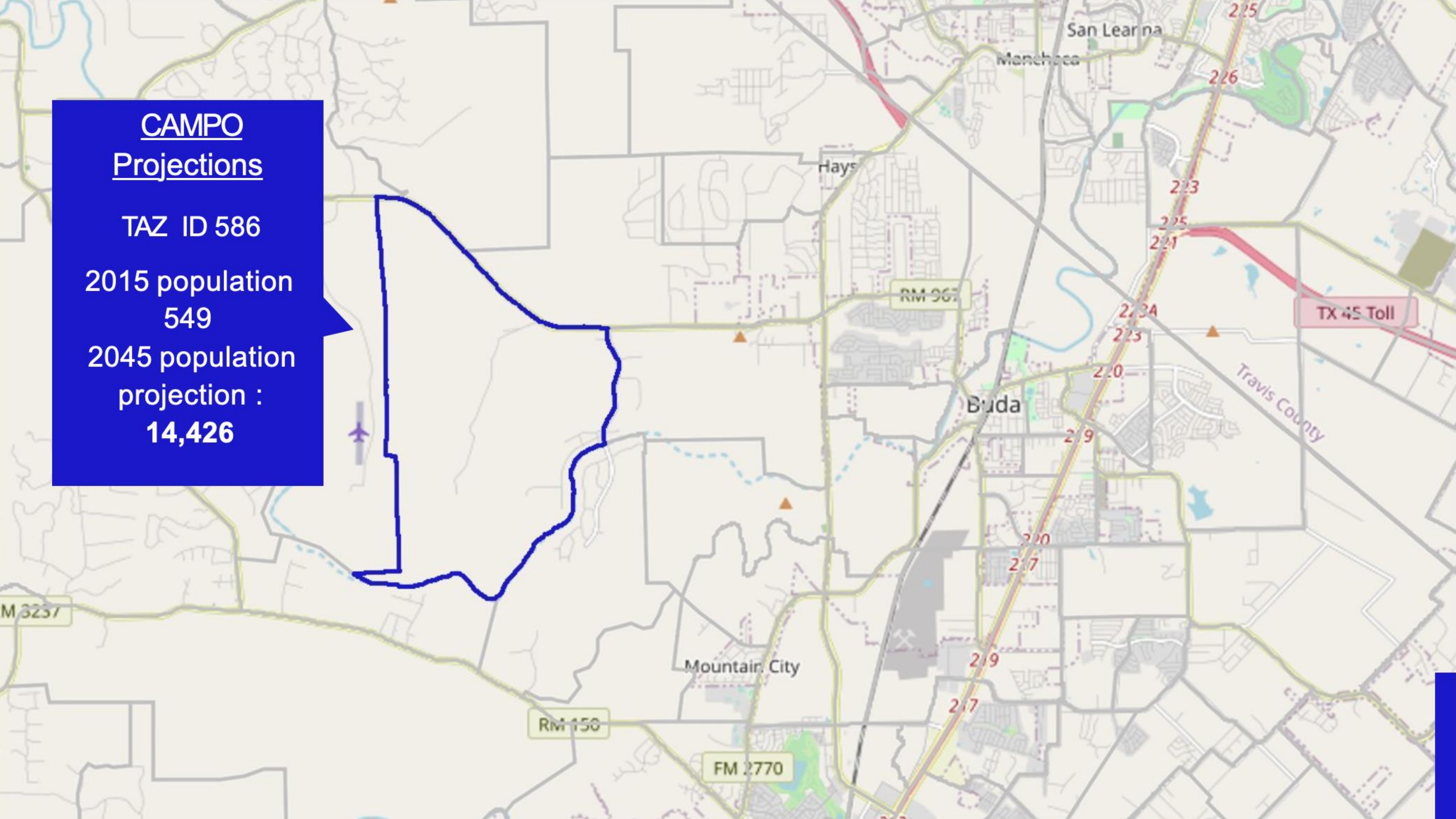


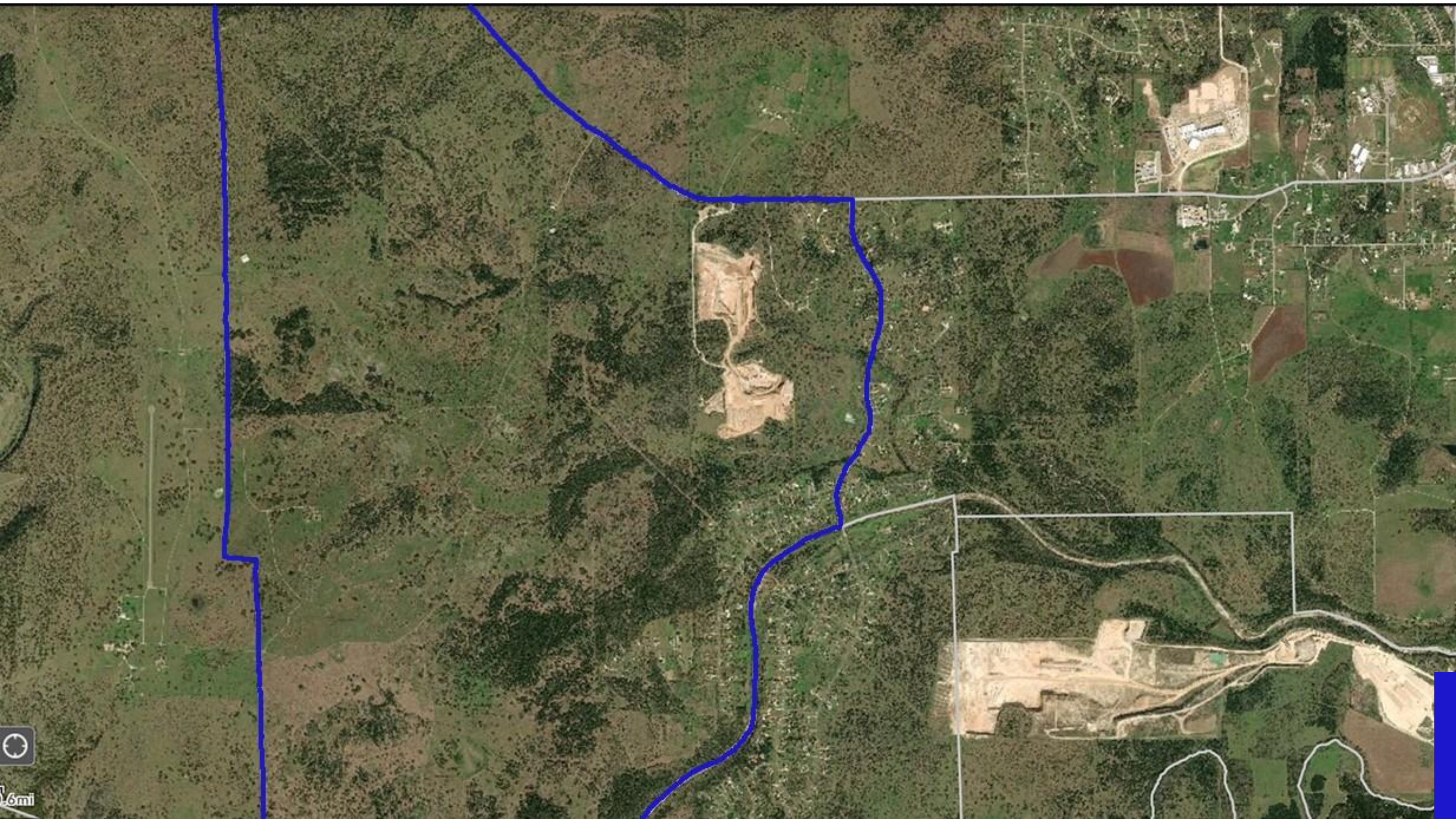
Sources: Aquifer deliniation from Texas Commission of Environmental Quality; 1997 population from 2003 CAMPO model files; 2015 population and 2045 projections from CAMPO 2045 Draft Plan demographics website.

CAMPO
Projections
TAZ ID 776
2015 population
898
2045 population
projection :
20,157



CAMPO
Projections
TAZ ID 586
2015 population
549
2045 population
projection :
14,426





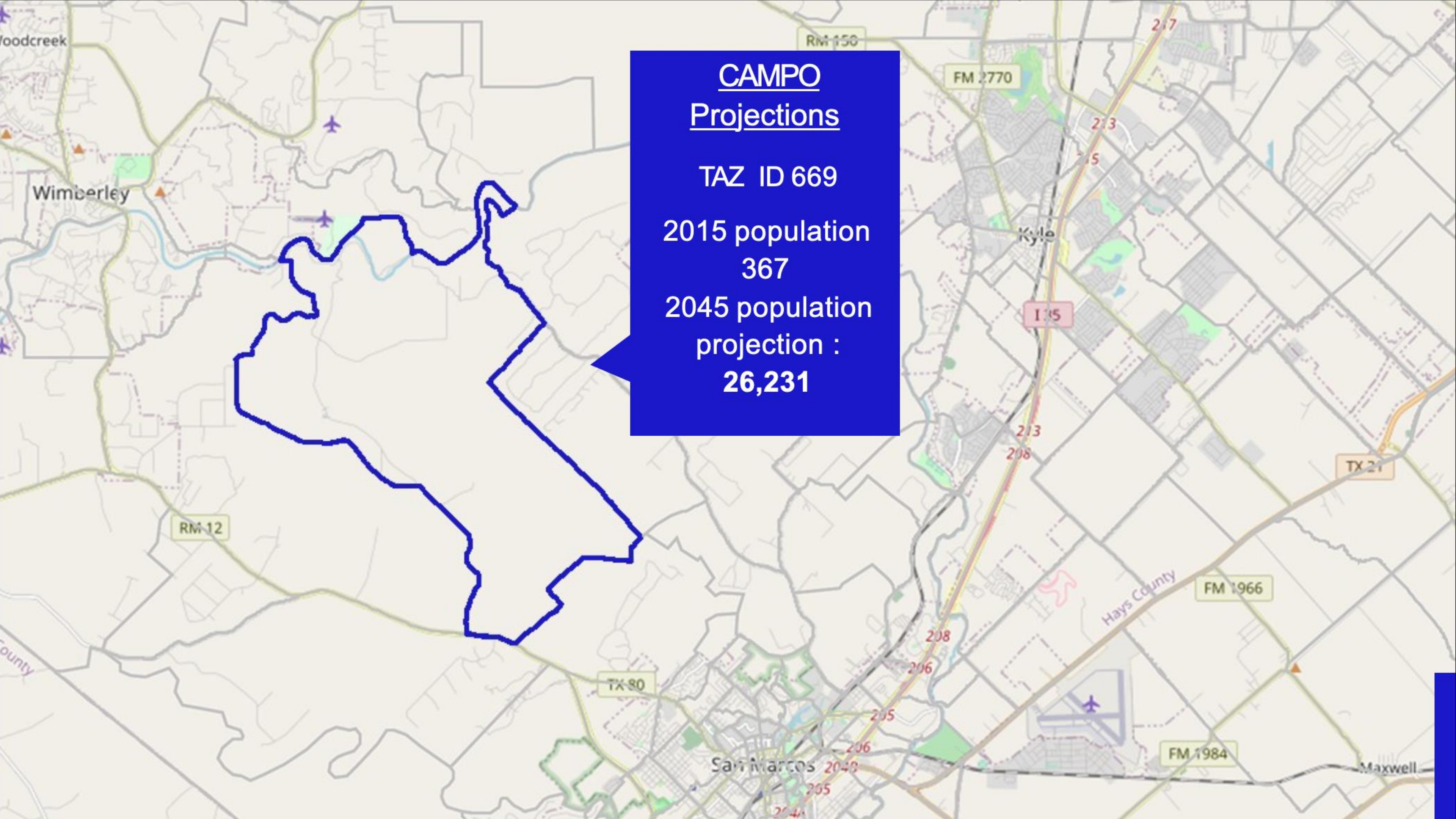
6mi

CAMPO
Projections

TAZ ID 669

2015 population
367

2045 population
projection :
26,231



MICHAEL DELL, ANSWERING QUESTIONS FROM SCHOOL CHILDREN:

"ARE YOU HELPING (ENVIRONMENTAL ACTIVIST) GRETA THUNBERG WITH CLIMATE CHANGE?"

"I think one of the really interesting things about this time, when a lot of people are working from home and not traveling so much -- that is definitely helping the environment and lowering the greenhouse gas emissions from all of the cars and airplanes that are not on the road or flying. One of the positives about this special period is that we're going to figure out how we can operate in a more virtual way, like we're doing right now, and still be successful. I think that will help the environment tremendously. I think we can all do our part to help the environment, and I think what Greta has done to raise the consciousness and the understanding of this challenge that we have is great, and it's causing all of us to think about how we can help more."

- Austin Statesman, April 23, 2020

REACH US

ADDRESS

4701 Westgate Blvd, D-401
Austin, Texas 78745

PHONE NUMBER

512-477-2320

EMAIL ADDRESS

sosinfo@sosalliance.org